

Subtract two 4-digit numbers – one exchange

1

Th	H	T	O
1,000 1,000	100 100	10 10	1 1
1,000 1,000	100 100	10	1 1
1,000			1

a) Use the place value chart to complete the calculation.

$$5,435 - 3,215 = \boxed{2,220}$$

b) Use the place value chart to complete the calculation.

$$5,435 - 3,216 = \boxed{2,219}$$

c) Which calculation was easier? Talk about it with a partner.

d) What happens when you don't have enough counters in a column to take away?

You need to make an exchange.

2 Complete the sentences.

1 ten can be exchanged for $\boxed{10}$ ones.

1 hundred can be exchanged for 10 tens.

1 thousand can be exchanged for $\boxed{10}$ hundreds.

3 Use a place value chart to complete the calculations.

a)

	H	T	O
	3	2 7	
-	1	1	9
	<u>2</u>	<u>0</u>	<u>8</u>

c)

	Th	H	T	O
	9	8	3 5	
-	6	2	1	6
	<u>3</u>	<u>6</u>	<u>2</u>	<u>9</u>

b)

	Th	H	T	O
	7	6	6 3	
-		1	3	4
	<u>7</u>	<u>5</u>	<u>3</u>	<u>9</u>

4 Use a place value chart to complete the calculations.

a)

	H	T	O
	2 2	2	7
-	1	3	2
	<u>1</u>	<u>9</u>	<u>5</u>

c)

	Th	H	T	O
	9	7 4	4	5
-	2	3	6	0
	<u>7</u>	<u>4</u>	<u>8</u>	<u>5</u>

b)

	Th	H	T	O
	7	5 7	3	
-		2	8	1
	<u>7</u>	<u>3</u>	<u>9</u>	<u>2</u>



5 Use a place value chart to complete the calculations.

		Th	H	T	O
		3 ²	2	7	0
	-	1	3	2	0
		1	9	5	0

		Th	H	T	O
		9 ⁸	8	4	5
	-	1	9	2	1
		7	9	2	4

		Th	H	T	O
		7 ⁶	6	7	3
	-		7	2	1
		6	9	5	2

6 Annie is calculating $3,467 - 2,148$

Here is her working.

		Th	H	T	O
		3	4	6	7
	-	2	1	4	8
		1	3	2	1

Do you agree with Annie? No

Explain your answer.

She has found the difference between the numbers in each column rather than making an exchange.

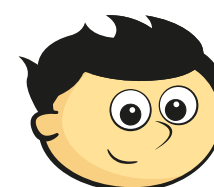
7 A car costs £8,716

A motorbike costs £2,341 less than the car.

How much does the motorbike cost?

£6,375

8 Jack is thinking of two 4-digit numbers.



The greater number is 6,410.
The difference between the two numbers is 3,107

What is the sum of the two numbers?



9,713

