



5 Match the inverse calculations.

$2,482 + 6,428 = 8,912$

$5,271 + 4,212 = 9,483$

$5,984 - 3,172 = 2,812$

$8,912 - 6,428 = 2,482$

$9,483 - 5,271 = 4,212$

$8,912 - 5,271 = 3,641$

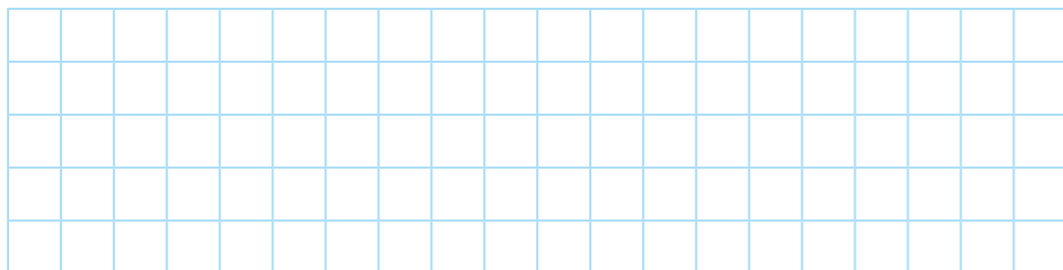
$8,912 = 3,641 + 5,271$

$5,984 = 3,172 + 2,812$

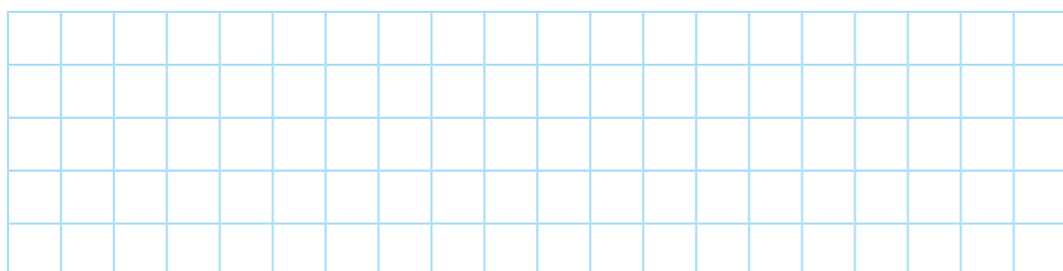
6 Complete the calculations.

Use inverse operations to check your answers.

a)  $763 + 4,072 =$



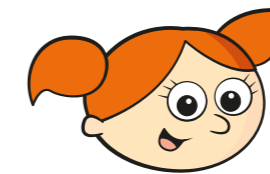
b)  $8,711 - 1,053 =$



c)  $2,351 + 14,706 =$



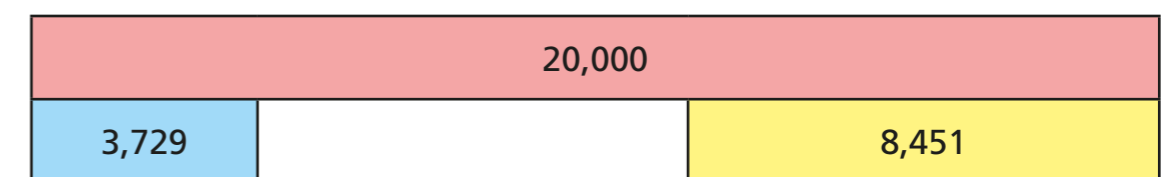
7 Alex thinks of a number.



When I add  
4,550 to my number  
I get 7,460

What number did Alex start with?

8 Here is a bar model.



Think of two different ways that you can find the missing part.

What is the missing part?

